

EXHAUST HOODS / NOZZLE PLATES

CONSTRUCTION

Nozzle plates in solid welded and completely folded sheet steel construction. Prepared to mount welder protection curtains (accessory).

With integrated exhaust nozzles and flange connections.
Paint finish RAL 7032 pebble grey.

Mounting of the nozzle plates can effect for example by means of thread rods top or by means of supports down.



ADVANTAGES

- simple and light steel construction
- flat and therefore space-saving
- cost-efficient
- low weight
- easy installation
- efficient and high-performance by nozzle technique
- easy fixing of welder protection PVC lamella
- cabin likewise constructions possible by means of lateral suspensions

Suction velocity below the hood area (depending on local conditions: application, cross flow, fume quantity, etc.) is between 0.1 m/s and 1.0 m/s. But this is to be individually designed for on site.



VERSIONS

Because of flexibility, different supporting constructions are often necessary.

Thereby, the hood / nozzle plate can be moved up to 3 m off the work station to get free access to the workstation, for example to charge by crane or fork lift truck.

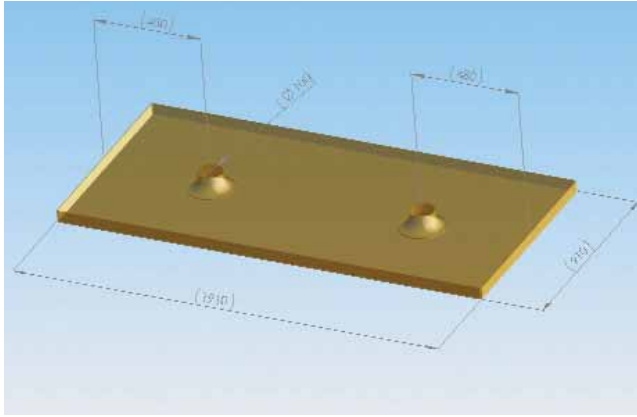
Please do not hesitate to contact us, we have got the solution.

AIR FILTRATION

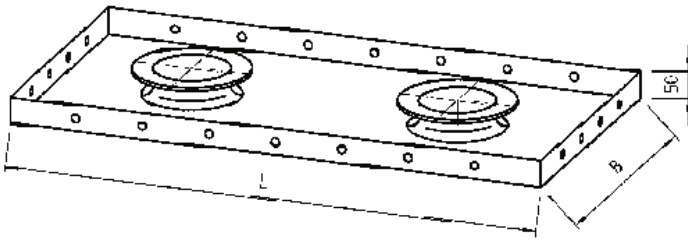
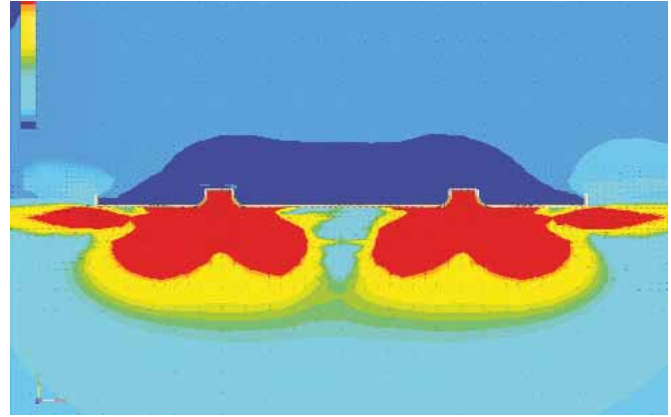
SYSTEM SOLUTIONS



TECHNICAL DATA



AIR FLOW SIMULATIONS



Width (B) (mm)	Length (L) (mm)	Area (m ²)	Nozzles (pcs.)	Required Air Volume (Example)		
				on 0.1 m/s	on 0.3 m/s	on 0.5 m/s
900	900	0.81	1	292	875	1458
900	1900	1.71	2	616	1847	3078
900	2900	2.61	3	940	2819	4698
900	3900	3.51	4	1264	3791	6318

© Keller Lufttechnik - all rights reserved. Subject to modifications. 2009-09



Keller USA, Inc.
 54 Great Hill Road, P.O. Box 546
 Naugatuck, CT 06770 USA
 Phone (203) 729-0145 . Fax (203) 729-0148
 E-mail: info@kellerusa.com
 www.kellerusa.com